

ColorBurst Quick Start Guide

Installation and Configuration

To install and run ColorBurst, you'll need the ColorBurst RIP installation DVD, your ColorBurst dongle, and your Mac OS X admin login password.

1. Check the OS version.

Make sure that Mac OS X 10.4 or later is installed and running on your computer.

2. Insert the ColorBurst dongle.

Plug the supplied ColorBurst dongle into any available USB port or hub.



3. Launch the ColorBurst installer.

Double-click the ColorBurst installer icon on the DVD. When the installation starts, follow the instructions on your screen.



4. Launch the ColorBurst RIP.

ColorBurst is installed in your Applications folder on your hard drive unless you specify otherwise. A ColorBurst alias is also placed on the desktop for easy access to the application.



The first time ColorBurst is launched, a series of dialogs will appear to walk you through the initial setup.

Register ColorBurst:

Register your copy of ColorBurst or click Register Later to continue. The registration window will pop up every few hours until registration is completed.

Environment not found:

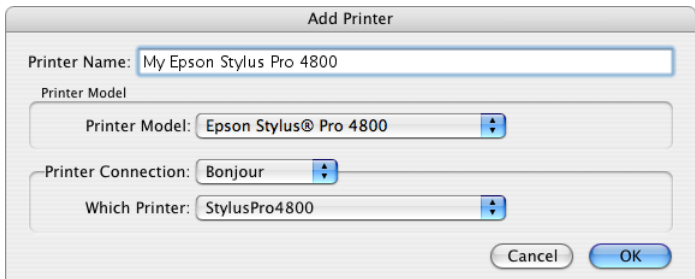
An environment has not been specified yet, so ColorBurst gives you a warning message and uses the first printer environment it finds in the list by default. You can change this setting later. Click OK to continue.

No printers defined:

A printer has not been defined yet, so ColorBurst gives you a warning message. You can set up a printer in the next dialog. Click OK to continue.

5. Add a printer.

Type in a name to describe your printer, choose a Printer Model, and choose a connection type (Bonjour, USB or Ethernet). If you select USB, ColorBurst will find your USB printer connection automatically. If you are using Ethernet, select Bonjour to locate your printer automatically, or select Ethernet to enter your printer's IP Address. Use the Test IP Connection button to make sure the IP Address is valid.



The screenshot shows a dialog box titled "Add Printer". It contains the following fields and options:

- Printer Name:** My Epson Stylus Pro 4800
- Printer Model:** Epson Stylus® Pro 4800
- Printer Connection:** Bonjour
- Which Printer:** StylusPro4800

At the bottom right, there are two buttons: "Cancel" and "OK".

Bonjour users:

If you select Bonjour and your printer is not listed in the menu, you may need to refresh the menu. Select Ethernet in the Printer Connection menu and then re-select Bonjour. This gives Bonjour more time for the printers to respond.

Ethernet users:

Before typing in an IP Address, you will need to burn a permanent IP address to the printer's Ethernet card using the printer manufacturer's software.

After initializing the print spooler, the ColorBurst Job Manager window will open. The Job Manager is the main ColorBurst interface where file processing takes place.

Basic Printing from ColorBurst

The following steps will walk you through your first print from ColorBurst.

1. Select an environment for your printer, resolution, media, and ink.

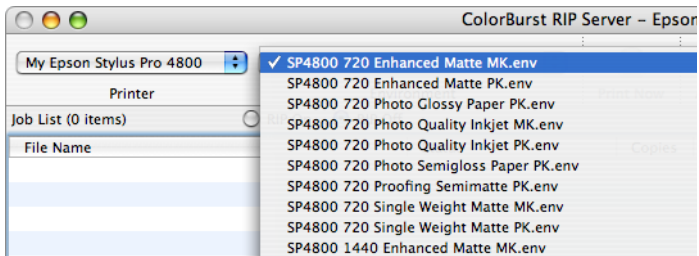
Use the Environment pop-up menu in the Job Manager window to select an environment. This will load all of the ColorBurst settings for that printer/media combination. The following naming conventions are used:

720, 1440, or 2880 = print resolution

other numbers (190, 250, 310) = paper weight

MK = Matte Black ink; PK = Photo Black ink

SWOP = SWOP® Certified environment and ICC profile



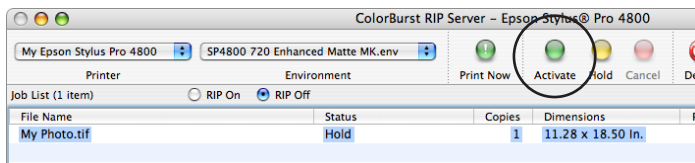
2. Check your printer settings.

Click the Printer button in the Job Manager tool bar to open the Printer Settings window. In the General tab, make sure the correct paper source is selected based on your media (roll or sheet). If you are using sheet paper, make sure to go to the Page Settings tab, select Use Page Settings, and type in your page size. You can center the image or type in an offset.



3. Open a file and activate it.

Click File menu > Open and select any valid image file (JPG, TIFF, EPS, PDF, or PS). The file is placed in the Job List. If Receive on Hold is selected in the Job Manager (it is on by default) your file will have a status of "Hold". Select your file in the Job List and click the green Activate button in the Job Manager toolbar to change the status to "Ready."



4. Click RIP On.

When you click RIP On, ColorBurst will begin to process the file at the top of the Job List. If your printer is connected properly, and your file has a "Ready" status, your file will start to print. After printing, the file will move to the Done List.

