

COLORBURST QUICK START GUIDE

Installation

To install and run ColorBurst X·Photo or X·Proof, you'll need the ColorBurst installation CD and your ColorBurst dongle.

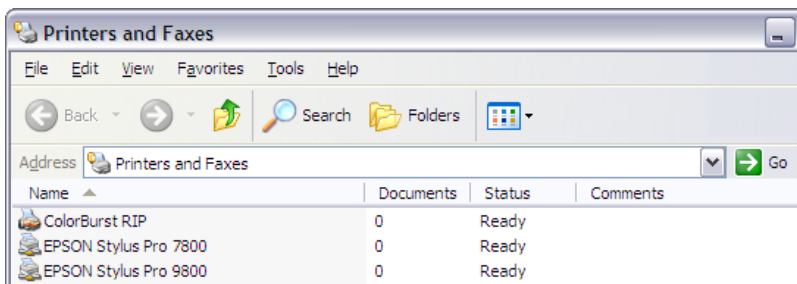
1. Make sure that your computer is running Windows XP, Windows 2000, or Windows 2003.
2. Plug the supplied ColorBurst dongle into any available USB port or USB hub.
3. Load the ColorBurst Installation CD in your computer. Run the ColorBurst installer on the CD.
4. When the installation starts, follow the instructions on your screen.



ColorBurst
Queue 7.50
Installer

Important: At the end of the installation process, a dialog with the message "Digital Signature Not Found" will appear. When this appears you must click "Yes" to continue the installation. This will create the ColorBurst printer, which you will use to print from applications. If the installation was successful, the ColorBurst printer will be found in your Windows Printers folder.

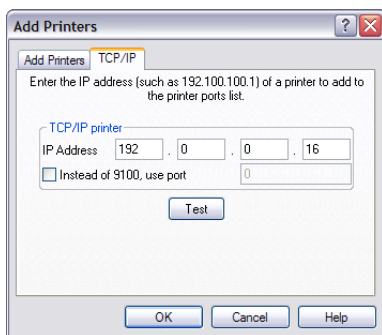
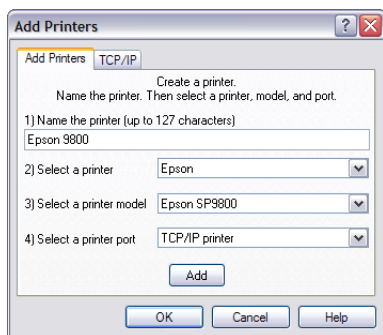
5. Open your computer's Printers list (found in the Windows Control Panel) and change the folder View to Details (View menu > Details) if the window is not already in Details view. Make sure the ColorBurst RIP printer and any printers you wish to print to using ColorBurst have a "Ready" status in your Printers list. If the status is "Use Printer Offline" it will not be recognized by ColorBurst.



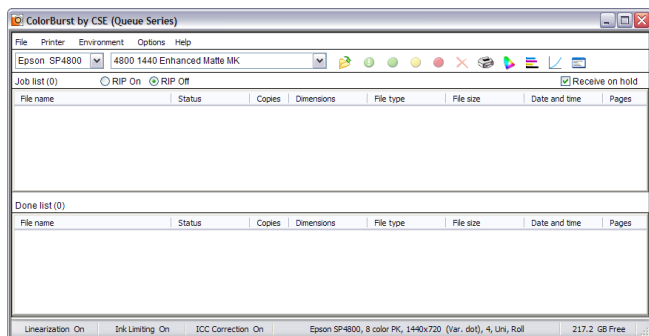
Configuration

The first time ColorBurst is launched, a series of dialogs will appear on your screen to walk you through the initial setup.

- 1. Register ColorBurst.** Register your copy of ColorBurst or click Register Later to continue. The registration window will pop up every few hours until registration is completed.
- 2. Add a printer.** The first time you run ColorBurst the Add a Printer dialog will appear. A printer must be added before you can continue. Type in a name to describe your printer and select a Printer manufacturer and model. The printer port menu will show any printer that has been created on your system. Select the printer created from your driver, or select TCP/IP and then enter an IP Address in the TCP/IP tab. Use the Test button to make sure the IP Address is valid.



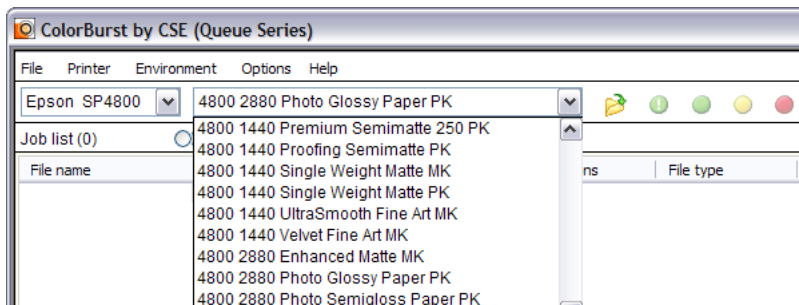
After adding a printer, the ColorBurst Job Manager window will open. The Job Manager is the main ColorBurst interface where file processing takes place.



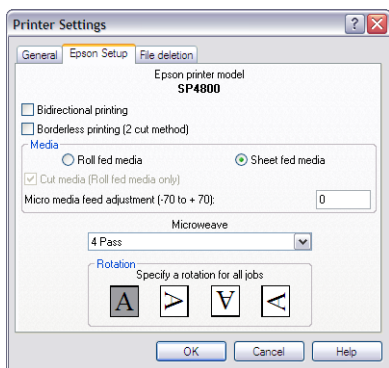
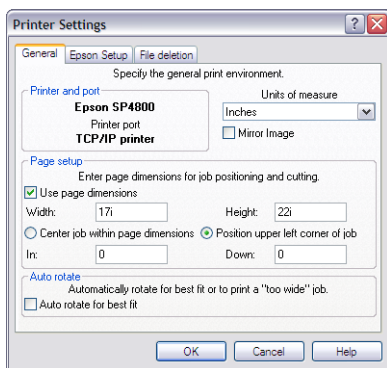
Basic Printing from ColorBurst

The following steps will walk you through your first print from ColorBurst.

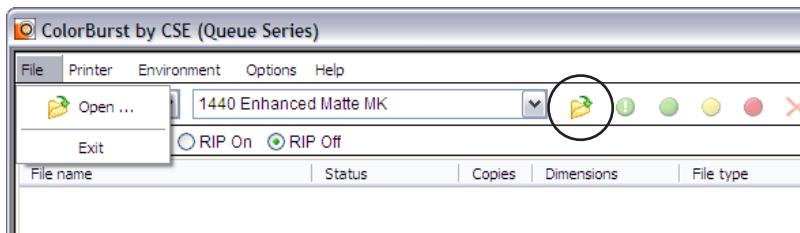
- 1. Select an environment for your printer, resolution, media, and ink.** Use the Environment pulldown menu in the Job Manager window to select an environment for your selected printer. This will load all of the ColorBurst settings for that printer/media combination.



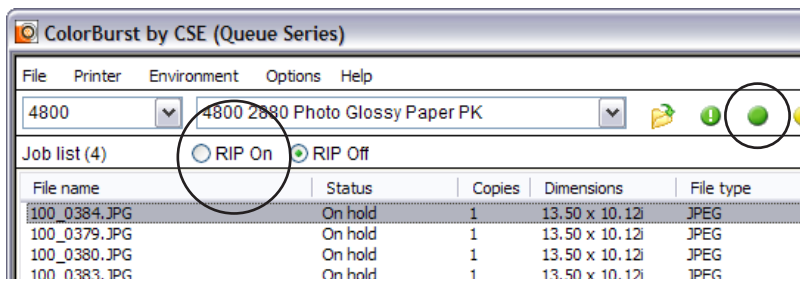
- 2. Check your page settings and printer setup.** Click the Printer button in the Job Manager tool bar to open the Printer Settings window. Use the first two tabs in this dialog to change any settings necessary. If you are using sheet paper or want to cut the paper to a specific size, make sure to select Use Page Dimensions and type in your page size. You can center the image or type in an offset.



3. **Open a file.** Click File menu > Open (or click the Open button in the toolbar) and select any valid image file (JPG, TIFF, EPS, PDF, PS, etc.). The file is placed in the Job List. If Receive on Hold is selected in the Job Manager (it is on by default) your file will have a status of "On Hold".



4. **Activate your file.** If your file is On Hold, select your file in the Job List and click the green Activate button in the Job Manager toolbar to change the status to "Ready."



5. **Click RIP On.** When you click RIP On, ColorBurst will begin to process the file at the top of the Job List. If your printer is connected properly, and your file has a "Ready" status, your file will start to print. After printing, the file will move to the Done List.